

TAMPAS DE RADIADORES - FLÓRIO

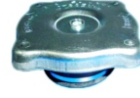
1560 / MF 11



13 libras

VW: Passat, Gol, Voyage, Parati, Saveiro, 74/86

1570 / MF 12



13 libras

FIAT: Fiat 147

1580 / MF 13



13 libras

FORD: Opala, Caravan, Chevette, Chevy, Marajó, /84
FORD: Escort, Verona

1590 / MF 14



7 libras

GM: A.C.D. 10, 60, 70, 80, /84
FORD: F 1.000, 4.000, /92; F 11.000 a 22.000, Jeep Willys
TRATOR: Massey Ferguson, Valmet, Cbt, Perkins
TOYOTA: Maxion

1600 / MF 15



7 libras

M.B.: 1113, 1115, 1313, 1315, 1513, 1516, 2013, 2213, 608, Ônibus, /89

1610 / MF 16



7 libras

M.B.: 2013, 2014, 2214, 2217, 2219, 2221, 1618, 1932, 1933, 1934

1619 / MF 21



13 libras

VW: 14.210, 16.210, /91
AGRALE

1620 / MF 17



15 libras

GM: Opala, Caravan, 85/92 (6 cil. c/ ar); S.10, Blazer, Silverado

1621 / MF 18



9 libras

GM: A.C.D. 10, 20, 40 a 90, 85/; Utilitário c/ ar; Custon 11.000 a 14.000, 85/; Caminhão
FORD: F 1.000, F 4.000, 93/98

1622 / MF 19



Tampa selada

GM: Chevette 85/

1623 / MF 20



Tampa da bomba d' água

FORD: Escort, Verona, Pampa
VW: Gol, Voyage, Parati, Saveiro (CHT)

1625 / MF 22



13 libras

VW: Todos; exceto para Reservatório com Sistema de Rosca
FORD: Cargo /00 (Com Reservatório Traseiro)

1626 / MF 23



7 libras

FORD: Cargo /00 (Com Reservatório Traseiro); F12.000, 14.000, 16.000, 93/ (Reservatório com 2 tampas)
VW: Reservatório de Caminhão e Ônibus; exceto 14.210, 16.210

1627 / MF 24



7 libras

AGRALE: 1.600.D, 1.800.D
FIAT

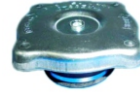
1628 / MF 34



Tampa Selada

FORD: Corcel, Belina, Del Rey, Pampa

1630 / MF 37



10 libras

M.B.: 1214, 1218, 1318, 1414, 1418, 1618, 2018, Ônibus, 90/

1638 / MF 54



20 libras

M.B.: Sprinter

1639 / MF 55

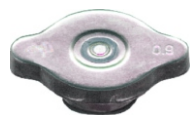


7 libras

SCANIA: 110, 111

TAMPAS DE RADIADORES - FLÓRIO

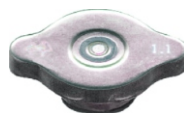
1640 / MF 83



0,9 bar

ASIA: Topic, Tower Coach
HONDA: Civic, Crx, 88/93
KIA: Besta, Sportage, Sephia, Clarus
TOYOTA: Corolla 83/92, Camry 83/92, Hilux 86/, Previa 91/, Lexus LS/SC 400
HYUNDAI | JOHN DEERE | KUBOTA | MAZDA | MITSUBISHI | NISSAN | SUBARU | SUZUKI

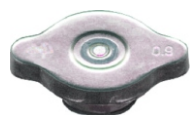
1650 / MF 84



1,1 bar

FORD: Explorer, Ranger, 95/ V6 e Thunderbird, Windstar
HONDA: Accord 90/93, Passport 94/95, Prelude S 92/95
MAZDA: 626 4cc 93/95, Milenia 95/
TOYOTA: Camry 3.0 94/, Lexus ES300 92/
KIA: Sportage, Sorento, Carnival, Bongo, Opirus, Cerato, 06/
ISUZU

1660 / MF 85



0,9 bar

MAZDA: Protege 95/
MITSUBISHI: Pajero Sport, Diamante, Expo, Galant
TOYOTA: Corolla 90/, Camry 2.2 92/ e V6 Aut. 90/91, Paseo 92/, Lexus SC/GS 300 93/, Hilux SW4

1670 / MF 86



1,1 bar

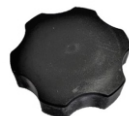
HONDA: Civic 92/, Accord 94/, Legend 91/95, Odissey 95/, Prelude SI 92/95, Fit 04/, Crv
SUZUKI: Sidekick 89/, Swift 95
TOYOTA: Camry 3.0 92/93, Supra 94/
NISSAN: Tiida
SUBARU: Subaru HS

1671 / MF 87



RENAULT: Clio, Scénic, Kangoo, Logan, Sandero
PEUGEOT: 206 (1.0 e 1.6 / 16 v.)

1793 / MF 99



1,4 bar

GM: Cobalt, Onix, Spin, Novo Prisma, Cruze, Sonic, Nova S.10, Trailblazer 13/, Tracker 14/

TAMPAS DE RESERVATÓRIOS DE EXPANSÃO - FLÓRIO

1680 / MF 30



1,4 bar

VW: Gol, Voyage, Parati, Saveiro, 87/99; Santana, Pointer, Logus, Apollo, Kombi Diesel
AUDI: 80, 100, A4 /96 (Ch.T 309402), A6 /96, A8
FORD: Belina, Del Rey, Pampa, 89/ (1.8), Royale, Versailles, Verona, 90/ (1.8), Escort 90/91 (1.8), Escort 92/96 (Motor AP)

1690 / MF 31



1,0 bar

FIAT: Palio, Siena, Strada, /00; Uno, Elba, Prêmio, Tempra, Pick-up, Tipo, Ducato 2.8 (PSA) Aspirado 03/ e Turbo 04/

1700 / MF 32



1,4 bar

GM: Chevette 87/; Monza, Kadett, Ipanema, Ômega, Vectra, Corsa, Astra, Celta, Zafira, Meriva, Prisma, Montana, Agile; S.10, Blazer, 96/ (2.5 e 2.8-Diesel)
FORD: Fiesta 02/ (exceto Fiesta Street); Ecosport, Courier, 03/ KA 08/
DAEWOO: Espero
TROLLER: Troller

1710 / MF 38



1,0 bar

VW: Com Sistema de Rosca (Reservatório de Caminhão e Ônibus)
FORD: Cargo 01/; F 1.000 96/; Ranger 97/; F 12.000, 14.000, 16.000, 93/
M.B.: Motores 457, 904, 906

1720 / MF 39



1,2 bar

FORD: Escort 97/; Mondeo /98; Fiesta /01; Fiesta Street, Ka /07; Courier /02; Focus 00/08

1730 / MF 40



1,4 bar

VW: Gol 00/08, Parati, Saveiro, 00/09; Golf /97; Passat /96, Polo Classic, Van, Eurovan, Caravelle
SEAT: Cordoba, Ibiza, Toledo, Inca

1740 / MF 41



1,4 bar

VW: Golf 98/06, Passat 97/, Bora, New Beetle
VW: Caminhões (Constellation): 17-250E, 24-250E, 13-180E, 15-180E, 19-370, 25-370E, 25-320, 19-320E, 11-05/; 26-260, 31-260, 31-320E, 31-370E, 09-07/07-08
AUDI: A3, A4, A6, 97/

1750 / MF 42



1,4 bar

RENAULT: 19, 21, Twingo, Clio, Mégane, Laguna, Scénic, Trafic, Express, Kangoo, Logan, Sandero

TAMPAS DE RESERVATÓRIOS DE EXPANSÃO - FLÓRIO

1760 / MF 47



1,4 bar

FIAT: Palio, Siena, Strada, 01/ (Motor Fire); Marea, Brava, Doblò, Idea (Tampa com válvula alternativa para FIAT: Punto, Linea, Stilo, Novo Uno 10/, Bravo)

1765 / MF 71



1,4 bar

VW: Gol 08/ (G5), Voyage, Saveiro, 09/, Fox, Space Fox 06/ (sem ar), Polo, Kombi 06/07 (1.4), Jetta 06/, Golf 07/, Amarok

1766 / MF 56



0,7 bar

M.B.: 1214, 1418, 1618, 1630, 1935, 2635

1767 / MF 57



0,75 bar

SCANIA: 112, 113H, 142

1768 / MF 58



SCANIA: Série 4

1769 / MF 59



0,7 bar

VOLVO: VOLVO

1773 / MF 72



0,7 bar

M.B.: Acelo (LTC 9t)

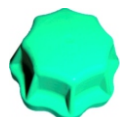
1774 / MF 73



1,4 bar

M.B.: Acelo (LTC 7t)

1777 / MF 82



Vedada

M.B.: 710-C, 1215-C, 1315, 1418, 1518, 1618-C, 1718-C
IVECO: Eurotec 450-E37

1778 / MF 88



Vedada

M.B.: OF. 1722, 1722-M, 2368, 1218, 1418

1779 / MF 89



1,4 bar

FIAT: Novo Palio 12/, Bravo 11/, Grand Siena 13/, Punto, Linea, Stilo, Fiat 500, Novo Uno 10/

1781 / MF 748



1,08 bar

TOYOTA: Hilux 05/

1782 / MF 91



0,9 bar

VW: Caminhões (Constellation): 26-260, 31-260, 31-320E, 31-370E, 08-08/, 19-320E, 19-370E, 25-370, 25-320, 06-07/

1783 / MF 92



1,4 bar

VW: Fox, Cross Fox, Space Fox, 06/ (Com Ar); Kombi 07/ (1.4), Up 14/ (1.0 / 12 v.), Golf 14/ (1.4 TSI)

1784 / MF 93



1,0 bar

FIAT: Ducato (Combinato, Maxi e Vetrato); Coupe, Alfa 145 96/99, 164 90/97, 166 99/01

1785 / MF 94



0,6 bar

VW: Caminhões acima de 13 Ton., (exceto modelo 850 e 23.150 04-05/)
AGRALE: Caminhões

TAMPAS DE RESERVATÓRIOS DE EXPANSÃO - FLÓRIO

1786 / MF 95



0,8 bar

VW: Caminhões (Delivery): 06-05/; 5-140, 8-150, 5-140E, 8-150E
ÔNIBUS: 17-260E-OT, 18.320E-OT

1787 / MF 96



1,2 bar

NISSAN: Frontier, X-Terra

1788 / MF 97



1,1 bar

FORD: Edge 08/14, Explorer 04/05, F 250 (Motor Cummins e MWM), F 350, F 4.000, Fusion 09/12, Ranger 01/12, Taurus 97

1792 / MF 98



1,45 bar

FORD: Transit, Focus, 08/; New Fiesta 11/, Ecosport 13/, Nova Ranger, Novo Ka 14/

1793 / MF 99



1,4 bar

GM: Cobalt, Onix, Spin, Novo Prisma, Cruze, Sonic, Nova S.10, Nova Blazer

1795 / MF 751



MITSUBISHI: L200 Triton

1796 / MF 752



1,4 bar

M.B.: Sprinter 2012/ (Motor OM 651)

1797 / MF 745



Kia.: Bongo 06/

2660 / MF 753



1,4 bar

RENAULT: Clio, Mégane, Scénic, Kangoo, Logan, Sandero, Duster, Fluence

2661 / MF 754



1,4 bar

PEUGEOT: 206 (1.0 / 1.4 / 1.6), 207, 307, 406, Hoggar
CITROËN: C3, C4 Pallas, C5, C8, Picasso